

EasyTrack2 HITEMP

...the value PTFE and high temperature coating profiling solution

The EasyTrack2 HITEMP system is a customised profile system based on the very successful original EasyTrack system, packaged specifically for PTFE and other high temperature cure processes.

Combining the simplicity of the EasyTrack2 data logger, EasyTrack Insight software and the high thermal performance characteristics of the TB5000-HT barrier, the EasyTrack2 HITEMP system provides an ideal profiling tool for OEM manufacturers and coating suppliers alike.

Temperature measurements can be made throughout the entire heating cycle from either product or oven environment. Such temperature profile information permits the optimisation and control of the process and guarantees both the quality of the end product and efficiency of the manufacturing process.

SYSTEM BENEFITS

Improve quality by confirming cure...prevent

- *Undercuring* – Brittle PTFE with poor adhesion characteristics
- *Overcuring* – Low gloss PTFE or chalkie cosmetic appearance of black or darker PTFE surface coatings
- *Excessive Heat* – Degradation of PTFE coating with release of gaseous toxic by-products
- *Poor Temperature Uniformity* – Poor colour and surface finish consistency

- **Rapid Fault Finding**

Identify problems within the oven such as cold spots quickly and efficiently. Identify the potential cause of problems such as blocked ducting, leaky burner box, faulty fan etc., allowing for rapid corrective action

- **Process Optimisation**

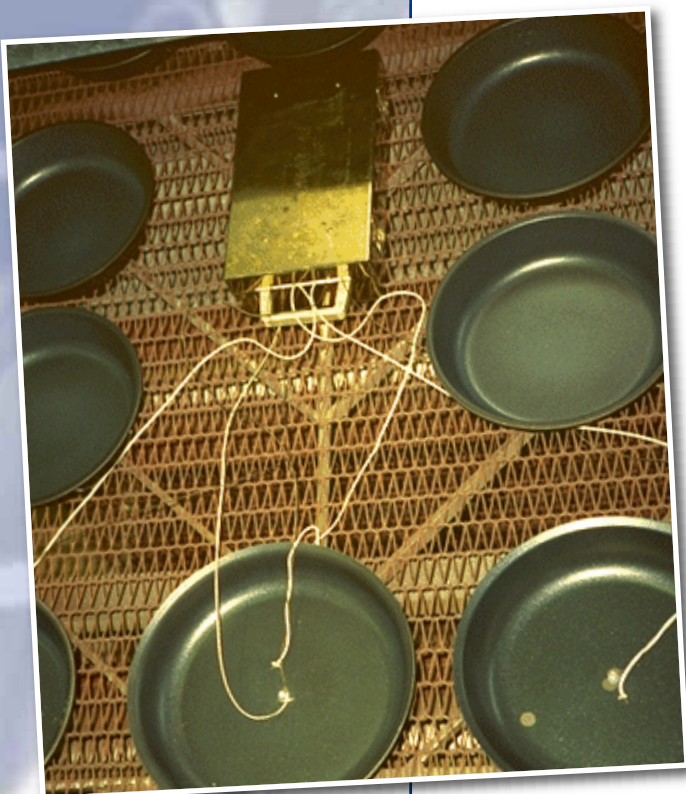
Optimise operating characteristics and so maximise productivity (line speed) and fuel economy

- **Validation**

Create documentary proof of process control for use with customers or quality audits (ISO9000 etc.)

SYSTEM FEATURES

- Simple, quick and easy to use
- 6 channels measuring up to 500°C
- Rugged enough to handle 300°C for 3 hours
- Light enough to travel with ease
- Shared profile data with PaqfileViewer



TECHNICAL SPECIFICATIONS

DATA LOGGER

6 Channel Logger:
Thermocouple Type:
Sample Interval:
Accuracy:
Accuracy Protection:

ET6061
 K
 0.5 seconds to 60 minutes
 ±0.5°C
 Cold junction compensation - accuracy guaranteed up to 85°C (logger temperature)
 0.1°C

Resolution:
Maximum Internal Operating Temperature:
Measurement Range:
Memory:
Memory (readings per channel):
Data Collection Start:
Battery:
Battery Life:

85°C
 -150°C to 500°C
 Non volatile with hot data protection
 6000
 Start button/temperature trigger
 Good quality 9V PP3 Alkaline (replaceable)
 At 5 second intervals – 120 hours continuous measurement

Communications Protocol:
LED Indicators:
Battery Compartment:

USB (CI1033)
 Always informed of status
 Magnetic catch - access without the need for tools

THERMAL BARRIER - TB5000-HT

Fitted with high temperature probe exit seal

Weight: 6.2kg
Dimensions (H x W x L): 130mm x 190mm x 292mm
Heatsink: 2 X TB1001
Thermal Duration:

Temperature °C	100	150	200	250	300	400
Time (hours)*	14.5	6.5	4.5	3.5	3.0	0.33

*Protection quoted at constant environmental temperature

THERMOCOUPLES

Type K specified to ANSI MC96.1 Special Limits of Error (±0.4% or ±1.1°C whichever is greater)

PA0182 1.5m Heavy Duty Glass Fibre 0 - 500°C
 PA0830 1.0m Fast Response Glass Fibre 0 - 700°C
 PA0710 1.0m Mineral Insulated 0 - 1200°C

SOFTWARE

Analysis tools ... to benefit your process

- Oven Start and Exit Correction
- Maximum Temperature and Time recorded
- Time At and Time to Reach Temperature
- DatapaqValue - Index of Cure
- View Data – Raw data measurement by measurement
- Mouse operated zoom
- Graph Overlay
- Logger Reset options (Sample interval, start button or temperature trigger)
- Onboard battery charge indicator
- Data Import/Export and Auto Paqfile Email
- Concise single page validation report
- Local language available
- FREE Paqfile viewer software - download from www.datapaq.com



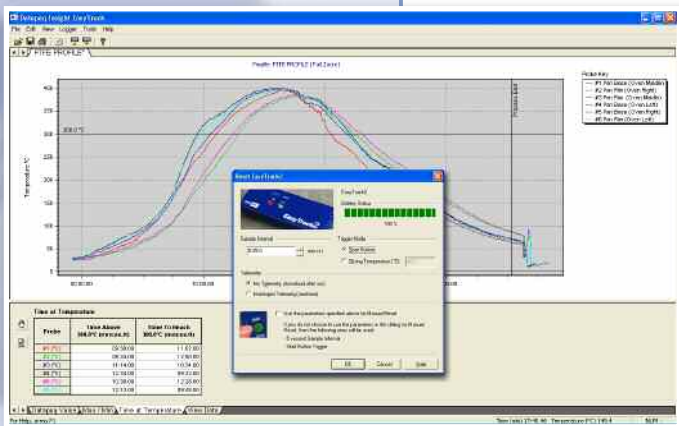
PA0182



PA0830



PA0710



Europe and Asia
 DATAPAQ Limited,
 Deanland House, 160 Cowley Road,
 Cambridge CB4 0GU, UK
 Tel: +44 (0)1223 423 141
 Fax: +44 (0)1223 423 306
 e-mail: sales@datapaq.co.uk
 Web: www.datapaq.com

North and South America
 DATAPAQ Inc.
 187 Ballardvale Street
 Wilmington, MA 01887, USA
 Tel: +1 978 988 9000
 Fax: +1 978 988 0666
 e-mail: sales@datapaq.com
 Web: www.datapaq.com

Germany
 DATAPAQ GmbH
 Valdorfer Straße 100
 D-32602 Vlotho, Germany
 Tel: +49 5733 9107 0
 Fax: +49 5733 9107 27
 e-mail: sales@datapaq.de
 Web: www.datapaq.de



www.datapaq.com

Due to continuing product improvements, specifications are subject to change without prior notice.

HiTemp.qxp - Iss 01 - JULY07